

Auto Ref/
Keratometers

Digital
Refractors

Exam Lanes
& Furniture

Slit Lamps

Lensmeters

Acuity
Charts

Retinal
Cameras

Ocular Surface
Analyzers

NEW FROM HUVITZ

HFC-1 NON-MYDRIATIC FUNDUS CAMERA

**QUICK AND STABLE AUTO
TRACKING & AUTO SHOOTING**

**FULL COLOR DIGITAL
IMAGE ACQUISITION**

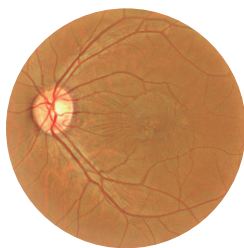


HFC-1

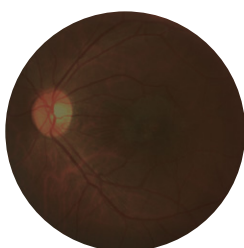
NON-MYDRIATIC
FUNDUS CAMERA

AUTO TRACKING & AUTO SHOOTING

Quick and stable auto tracking and auto shooting based on highly accurate autodetection technology. There is no need to change modes for measuring a small pupil, as HFC-1 can automatically adjust to measure this.



Applied EVT
(Epiretinal Membrane)



Unapplied EVT
(Epiretinal Membrane)

ENHANCED VISUALIZATION TECHNOLOGY (EVT)

EVT helps acquire the highest quality images in for any clinical case. EVT is beneficial when capturing fine pathological variation.

20 MEGAPIXEL HIGH DEFINITION CAMERA

Produces high quality images with reduced Motion Artifact, and can be enlarged to study details. Images can be visualized through a variety of modes for more accurate analysis.

FIXATION TARGET

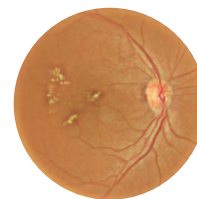
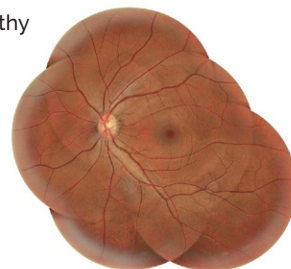
By adjusting the Fixation Target position on the LCD touch screen display, users can acquire more accurate and precise measurement results.

VARIETY OF IMAGE MODES

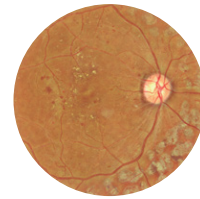
- **Color:** Brilliant & Full Spectrum Images
- **Blue:** RNFL, Wrinkles, Edema, Cell Membrane
- **Red:** Pigmentary Abnormalities, Choroidal Rupture, Birthmark, Melanoma
- **Red-Free:** Glaucoma, Diabetic Retinopathy
- **Cobalt:** RNFL

PANORAMA VIEW

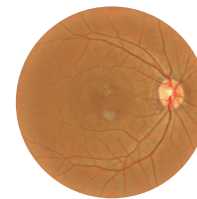
Creates high resolution composite image showing broader range of retinal surface area, minimizing distortion.



AMD



PDR, Laser Scar



CNV

| SPECIFICATIONS | |
|---|---|
| Type | Non-mydriatic fundus camera |
| Resolution | Center : 60 lines/mm or more Middle (r/2) : 40 lines/mm or more Periphery(r) : 25 lines/mm or more |
| Angle of View | 45° |
| Camera | Color Image Sensor |
| Minimum Pupil Diameter | 4.0mm (Normal mode), 3.3mm (Small pupil mode) |
| Flash Light | White light |
| Working Distance | 33mm |
| Display | 12.1 inch, 1280x800 pixel, Touch panel color LCD |
| Dioptric Compensation for Patient's Eye | -33D ~ +33D total -33D ~ -7D with minus compensation lens -13D ~ +13D with no compensation lens +7D ~ +33D with plus compensation lens |
| Fixation Target | LCD (internal), White LED (external) |
| Horizontal Movement | 70mm (back and forth), 100mm (left and right) |
| Vertical Movement | 30mm |
| Chinrest Movement | 62mm (up and down), motorized |
| Auto Tracking | X,Y for positioning, Z for working distance |
| Power Supply | AC 100-240V, 50/60Hz, 1.6-0.7A |
| PC | Built-in computer |
| Dimensions | 13(W) x 21.4(D) x 20.5(H)in/330(W) x 542(D) x 521(H)mm |
| Mass | 28kg/61.8lbs |
| Fully compatible with all EMR Systems and equipped with a full year warranty. | |



DIAGNOSTICS



SURFACING



COATING



FINISHING



CONSUMABLES



SERVICE